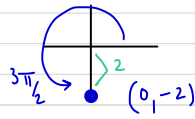
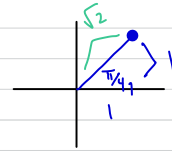


HW #21 Final Answers

1. $(x, y) = (0, -2)$



2. $(x, y) = (1, 1)$

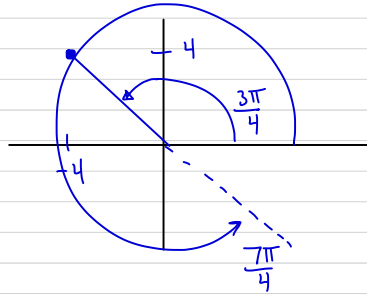


3. $(x, y) = \left(-\frac{\sqrt{3}}{2}, \frac{1}{2}\right)$



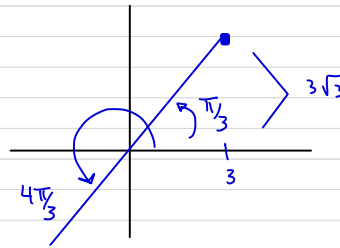
4. $r > 0: (r, \theta) = (4\sqrt{2}, \frac{3\pi}{4})$

$r < 0: (r, \theta) = (-4\sqrt{2}, \frac{7\pi}{4})$

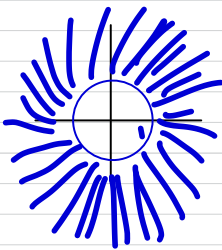


5. $r > 0: (r, \theta) = (6, \frac{\pi}{3})$

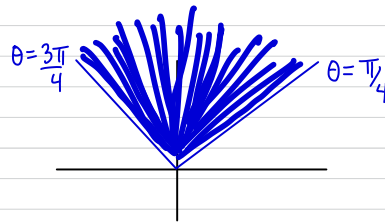
$r < 0: (r, \theta) = (-6, \frac{4\pi}{3})$



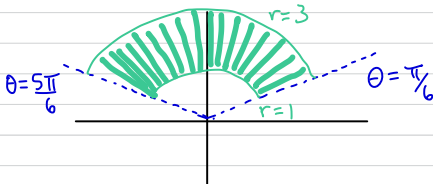
6.



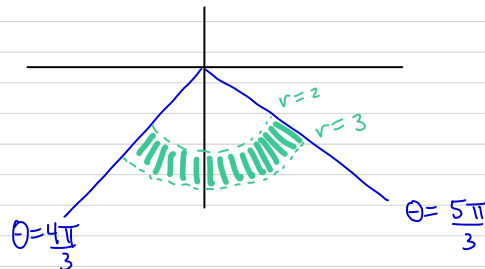
7.



8.

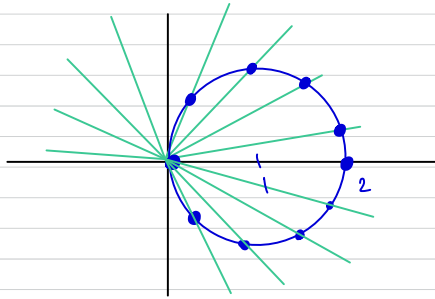


9.

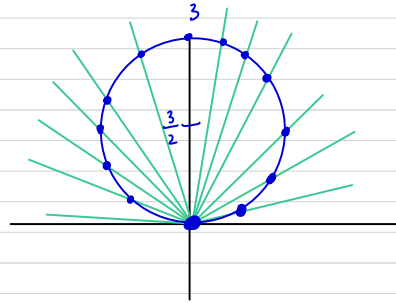


For 10-14, Make sure to show BOTH Cartesian + Polar Plots

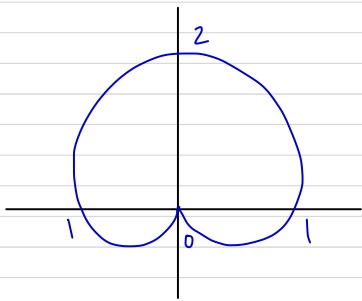
10. Polar Curve



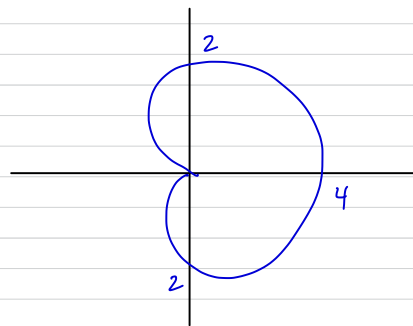
11. Polar Curve



12. Polar Curve



13. Polar Curve



Polar Curve

14.

